

# MVS6300-LV

MV Turnkey Station for 1500 Vdc String Inverter SG250HX



## SAVED INVESTMENT

- Up to 7 MW block design
- Easy transportation due to standard container design

## SAFETY

- MV and LV isolated, with independent control room
- All key components front accessible, no need walk-in operation
- All pre-assembled for easy set-up and commissioning

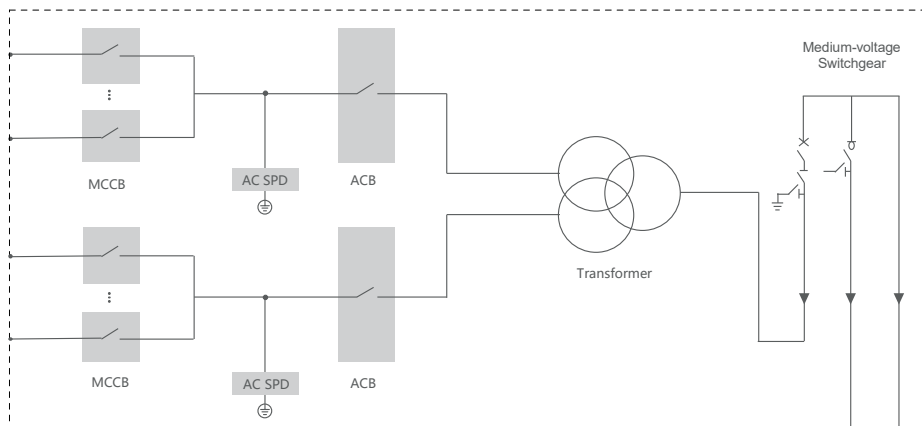
## EASY O&M

- Online analysis for fast trouble shooting
- Modular design, main devices easy replacement

## RELIABLE

- All components have been type tested
- Compliance with standards: IEC 60076, IEC 62271, IEC 61439

## CIRCUIT DIAGRAM



Type designation	MVS6300-LV
<b>Transformer</b>	
Transformer type	Oil immersed
Rated power	6300 kVA @ 40 °C
Max. power	7000 kVA @ 30 °C
Vector group	Dy11y11
LV / MV voltage	0.8 kV / 20 – 35 kV
Maximun input current at nominal voltage	2525 A * 2
Frequency	50 Hz / 60 Hz
Tapping on HV	0, ±2 * 2.5 %
Peak efficiency index	99.51 %
Cooling type	ONAN (Oil Natural Air Natural)
Impedance	7 % (±10 %)
Oil type	Mineral oil (PCB free)
Winding material	Al / Al
Insulation class	A
<b>MV Switchgear</b>	
Insulation type	SF6
Rate voltage	24 – 36 kV
Rate current	630 A
Internal arcing fault	IAC AFL 20kA / 1s
Qty.of feeder	3 feeders
<b>LV Panel</b>	
ACB specification	3200 A / 800 Vac / 3 P, 2 pcs
MCCB specification	250 A / 800 Vac / 3P, 28 pcs
<b>Protection</b>	
AC input protection	Circuit breaker
Transformer protection	Oil-temperature, Oil-level, Oil-Pressure
Relay protection	50 / 5I,50N / 51N
LV overvoltage protection	AC Type II (Optional: AC Type I+II)
<b>General Data</b>	
Dimensions (W*H*D)	6058*2896*2438 mm
Approximate weight	22 T
Operating ambient temperature range	-20 to 60 °C (optional: -30 to 60 °C)
Auxiliary power supply	5 kVA / 400 V (optional: max. 40 kVA)
Degree of protection	IP54
Allowable relative humidity range (non-condensing)	0 – 95 %
Operating altitude	1000 m (standard) / > 1000 m (optional)
Communication	Standard: RS485, Ethernet, Optical fiber
Compliance	IEC 60076, IEC 62271-200, IEC 62271-202, IEC 61439-1, EN50588-1